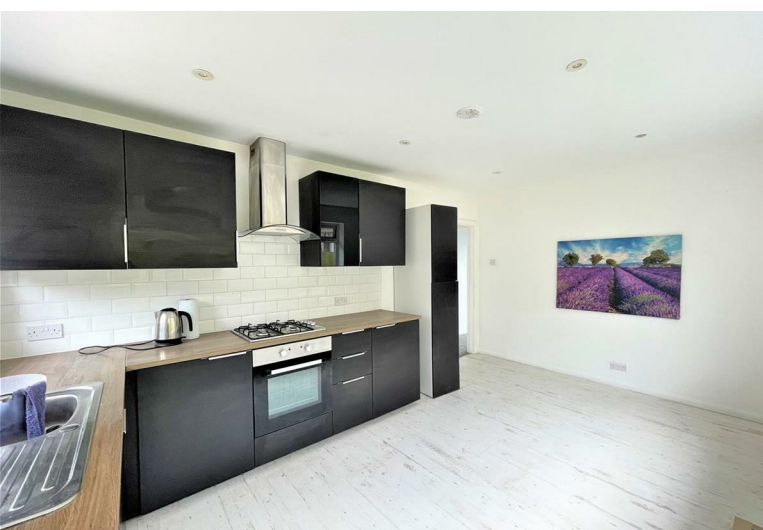


3  
BED

# Three Bedroom Bungalow with Annex

2, Valley Road, Newhaven, BN99XA



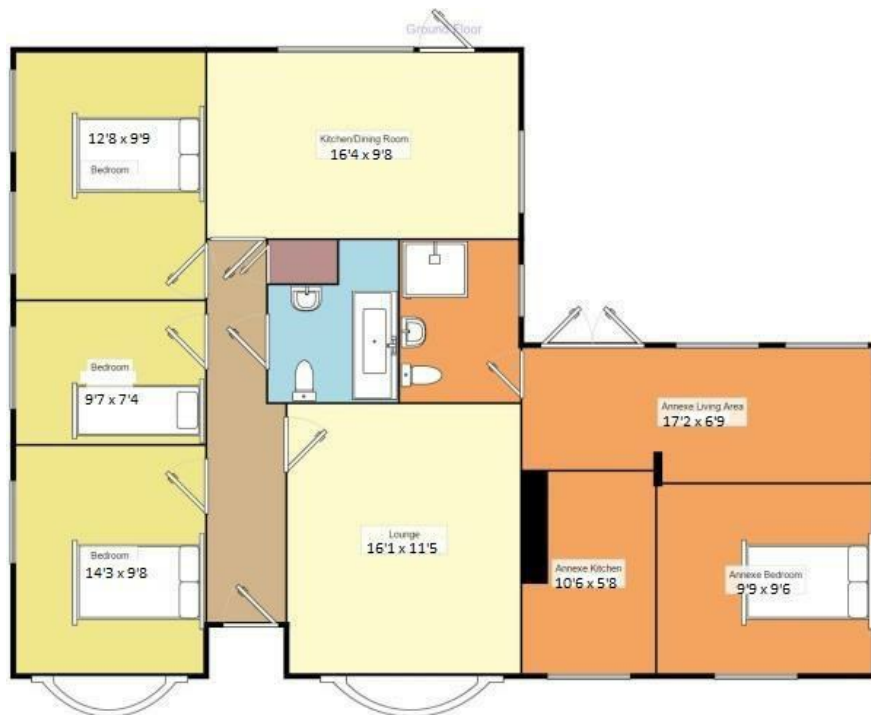
Price £450,000

Freehold

**phillipmann**  
we do more

[www.phillipmann.com](http://www.phillipmann.com)





Measurements are approximate. Not to scale. For illustrative purposes only.

## inbrief...

Phillip Mann estate agents are delighted to offer for sale this three bedroom detached bungalow which has a separate one bedroom annex. The property is located in a much popular residential area and is being sold with no ongoing chain.

A part glazed entrance door gives access to the large entrance hall which has loft access, storage cupboard and doors which leads to the accommodation.

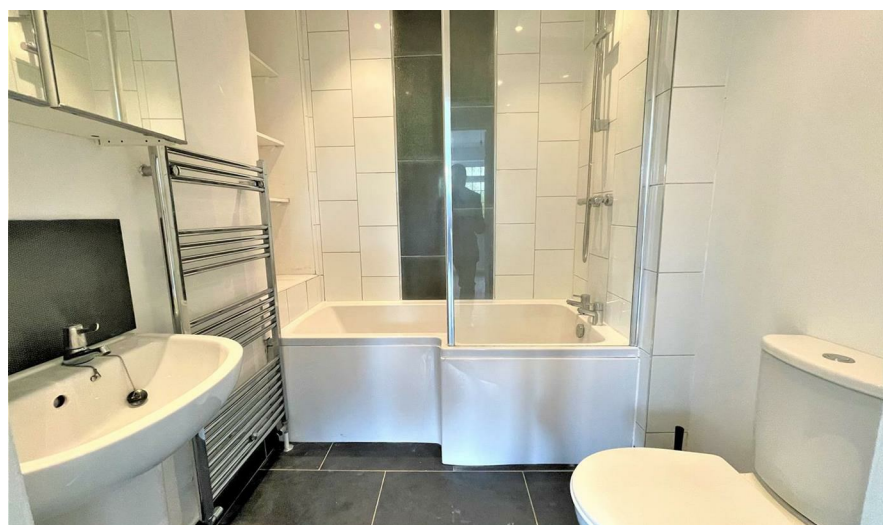
The lounge is a good size room which has a feature electric fireplace and a bay window overlooking the front of the property. The kitchen/breakfast room has a range of wall and base units which incorporates a selection of cupboards and drawers. A sink unit is set into work-surface and there is space for all of the modern day appliances. A window overlooks the side and a door overlooks the rear.

Bedroom one is a generous size double with space for wardrobes and a window overlooks the front of the property. Bedroom two and three are good size doubles which overlook the side. Completing the property is a refitted family bathroom which has a paneled bath, low level WC and wash hand basin.

Outside there is off road parking for several vehicles and gardens to all sides.

The self contained annex has good size accommodation to include lounge which overlooks the rear. The kitchen has fitted cupboards and drawers along with appliance space and space for small table with a window overlooking the rear. The bedroom is a good size double with space for wardrobes. Completing the annex is a shower room which has a corner shower cubicle, low level WC and wash hand basin. The room is complete with fully tiled walls and a window.

The whole property has great possibility for home/income stream and viewings are highly recommended.



Energy Rating C

Council Tax Band F

moreinfo...



Phillip Mann Newhaven Office  
16 Bridge Street, Newhaven, BN9 9PJ  
01273 517517

To see more details on this & all our homes go to  
[www.phillipmann.com](http://www.phillipmann.com)